



Doulton House, Fulham
London SW6

GARTONJONES.COM



Doulton House, Fulham London, SW6

GARTON JONES.COM

13 Park Street
Chelsea Creek
London
SW6 2FS

Sales +44 (0) 20 7824 7090
paul@gartonjones.com
www.gartonjones.com

£1,400 Per Week

A THREE DOUBLE BEDROOM apartment of approx. 1851 sq.ft (172 sq.m) available to rent in Chelsea Creek. This FURNISHED apartment compromises of a living/dining room with access to BALCONY, separate kitchen, master bedroom with a further PRIVATE TERRACE, modern integrated kitchen, three bathrooms (en-suite) and secure UNDERGROUND PARKING. 24 HOUR CONCIERGE. Spa and fitness suite with swimming pool. King's Road and Chelsea Harbour are easily accessible and Imperial Wharf Station is just a short walk away from the property.

- 1851 sq.ft (172 sq.m)
- Three Double Bedrooms
- Three Bathrooms
- Living/Dining Room
- Modern Integrated Kitchen
- Two Private Balconies
- Underground Parking
- 24 Hour Concierge
- Residents' Gym with Spa Facilities & Indoor Swimming Pool
- Close to King's Road, Chelsea Harbour and Imperial Wharf Station



Please note furniture may differ to that shown in the photos.

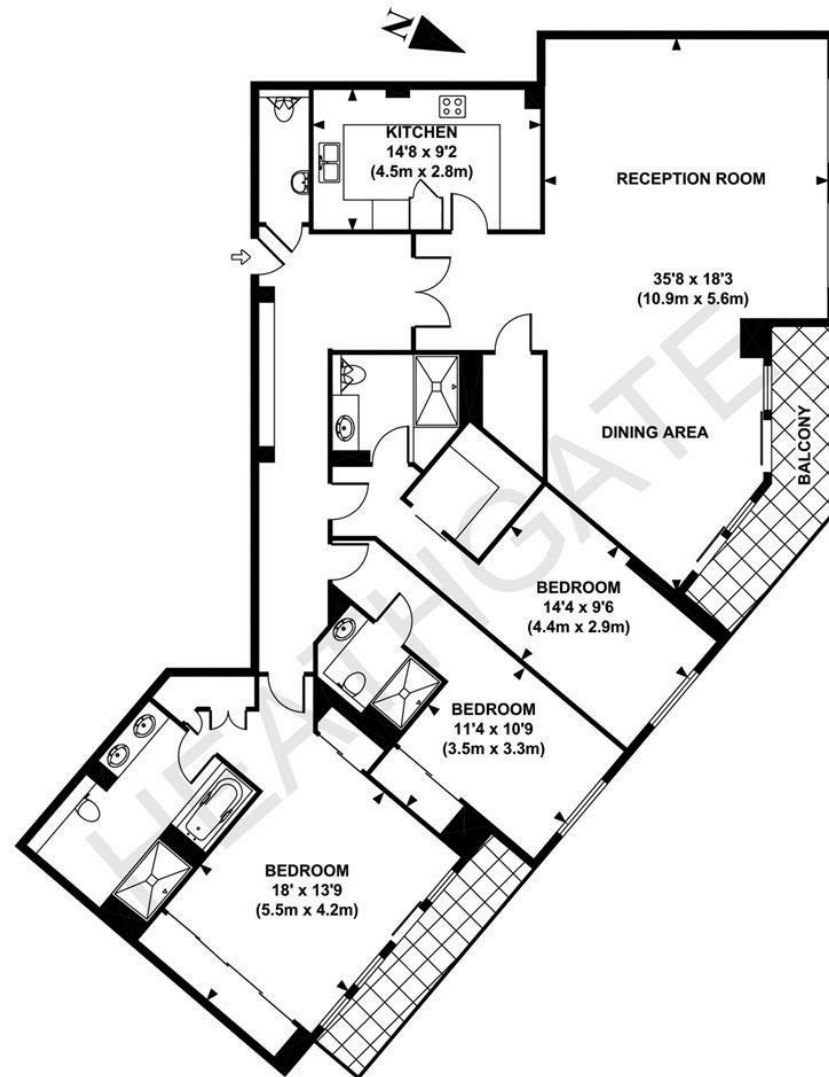
Available 7th November 2025

Deposit 6 weeks Rent
12 month Contract

Council tax - Hammersmith & Fulham - Band H
EPC B (81)

EPC certificate available on request.





FIFTH FLOOR
APPROX. GROSS INTERNAL FLOOR AREA 1851 SQ FT / 172 SQ M
Copyright Heathgate 2016

This floorplan is for illustration purposes and may not truly reflect design or dimensions and should not be used for valuation or condition purposes.

